

COUNTY OF ALLEGHENY



RICH FITZGERALD
CHIEF EXECUTIVE

SHUMAN JUVENILE DETENTION CENTER

7150 HIGHLAND DRIVE
PITTSBURGH, PA 15206
PHONE (412) 665-4114
FAX (412) 661-2048
WWW.ALLEGHENYCOUNTY.US

EARL HILL
DIRECTOR

February 10, 2016

Dear County Commissioners Association of Pennsylvania Selection Committee:

I am writing this letter to nominate Ms. Gerry Florida for the Juvenile Detention and Alternative Programs Best Practice Award. As Director of the Shuman Detention Center, I continue to be amazed by Ms. Florida's exceptional commitment to improving the lives of residents and families she serves. She is highly creative, technically profound and demonstrates deep thinking in her work with high risk youth.

Ms. Florida has submitted two entries: **Why Art? Billboard and the Furniture Project/Revamped Furniture Exchange**. The **Why Art? Billboard** project is designed to solicit youth's ideas regarding the importance of art in their lives and recognize the importance of the everyday value of art through many forms it takes. The **Furniture Project/Revamped Furniture Exchange** program will utilize used furniture for youth to design and decorate to resale and the proceeds will go towards future programming needs.

If you need additional information, or seek further clarification, please do not hesitate to contact me.

Respectfully,

A handwritten signature in black ink that reads "Earl Hill".

Earl Hill
Director
Shuman Detention Center

2016 Jail Best Practices Award

OFFICIAL ENTRY FORM

This form must be attached to all entries. Entrants must complete all sections for the entry to be considered complete. A copy of this official entry is available electronically at <http://www.pacounties.org/ProgramsServices/Pages/CriminalJusticeSystemBestPractices.aspx>

County Name Shuman Center County Class Detention Center (Large)
Address 7150 Highland Drive City Pittsburgh Zip 15206
Contact Name Earl Hill Title Director
Department Allegheny County Phone (412) 665-4114
Fax (412) 661-2048 Email Earl.Hill@AlleghenyCounty.US

Project Information

Title Why Art? Billboard Start Date 2016

Each application must be submitted with two signatures. Place appropriate signatures on two of the lines below:

Chair of the Board of County Commissioners

William [Signature]
County Chief Executive Officer

Maria [Signature]
Chair of the County Prison Board

Program Narrative

A separate program narrative document must be attached to this form that answers the following questions in the order presented. This must be typed in a Word-document, Times New Roman, 10-point type.

- **Need:** a description of the identified need and the background including what programs were in place before the current project, if any, and how it led to this effort
- **Program/policies:** a description of how the project enhanced general operations programs/policies, treatment, and custody
- **Approach:** a description of the project, including any evidenced-based approaches to jail diversion, community involvement strategies, formation of stakeholder groups, county-wide planning strategies, etc.
- **Evaluation:** a brief description of how the project was evaluated and any lessons learned
- **Stakeholders:** a brief description of the community, including a description of key stakeholders, organizations, and county departments that were involved in the project
- **Processes:** a description of how the activities or processes utilized in this project were altered or will be continued based on experience, including plans for leveraging additional resources
- **Costs:** a description of any costs associated with the project and how it was funded; cost savings, if any and any change in community acceptance, reductions in insurance costs, or inspection improvements that resulted from the program

Scoring will be based on the elements as described above.

Please attach supporting documents, forms or other information that support the award entry. Entries must be received by close of business on February 12, 2016. Winners will be announced during the CCAP Spring Conference, March 13 - 16, 2016. More information: Brinda Carroll Penyak, bpenyak@pacounties.org or (717) 526-1010.

**Juvenile Detention and Alternatives Program
Best Practice Award**

Nomination Submission

**Gerry Florida
Shuman Juvenile Detention Center
Jewelry and Arts Program & Talisman Project
“Enough Violence”
Pittsburgh, PA**

To the Committee Who Will Read this Submission:

I have spent six years in an arena that would be too difficult for most. I have been both volunteer and paid. There are days I feel emotionally battered by unsettling, tragic, heartbreaking stories that no child should ever experience let alone should I be witness to hear. There are days where I feel “beaten up” from having my patience, frustrations and emotions challenged in the process, not by the residents but by the ignorance and voids that occur on the outside. I have worked very hard as an advocate for humanity and change. I am an artist by all nature...so forgive me, if I cannot reduce the results of my efforts, passions and beliefs or painful stories I am haunted by, neatly into one page.

Gerry Florida

Narrative:

DESCRIPTION OF THE PROBLEM

In addition to the program/projects initiated in the 2014-2015 years, I have included updates that will characterize the progress and developments in identifying obstacles, creating viable solutions and developing positive outcomes that complement our current programs.

My art mission is to subliminally introduce messages of ability, self-acceptance and individual worth in order to integrate personal experiences and human imperfections in the creation of a strong and resilient character. The use of damaged, discarded and less than perfect materials becomes my metaphor in creating recycled art. The damaged imperfect materials are lessons that parallel the imperfections and failures of life... and the resulting beautiful creations are the outcome of incorporating those imperfections in creating new beauty.

It was after the CCAP Best Practices Recognition Award of 2015 that I channeled my focus on the problems surrounding the recidivism rate in our facility, recognizing that the most sophisticated academics offered through our Title I After School Programs and the Allegheny Intermediate Unit day school did not substantially penetrate / disrupt the recidivism rate. Through our programs we have introduced / enlighten youth on their untapped interests, abilities and potential for social contribution but post placement relapse occurs with blame placed on the families and the youth. The recidivism rate remains unchanged or at best barely effected. Somehow we fail to recognize the precursor that will better channel efforts to interrupt the further progression of recovery failures. I realized that the approach to the problem of rehabilitation may be in a flawed chronological order...for residents, the failure may be the inability to use / apply their acquired academic knowledge once released. It is a misconception in the order of delivery and expectation.

Youth in detention facilities suffer from poor self-images unable to erase the stigma both publically and privately of their failures. Sometimes the skills and tools we equip them with may not be the catalyst necessary to help them overcome an environment that does not afford opportunities to utilize what they learn to succeed. In order to be receptive to change, they have to first buy into the idea that social and academic success can work for them and more importantly that they are entitled to finding a better way of life. Convincing them of this is the challenge...it's the flawed belief that keeps them stuck.

In understanding this, I concluded that we are unknowingly doing it "backwards" and that our first order of action should focus on ways to develop the self-belief, esteem and desire in an individual to be able to integrate the knowledge acquired through academics. I operate my program from this belief. In order to utilize acquired skills effectively, an individual must:

- *1) Believe they are worthy, deserving and entitled to success.
- *2) Believe that they can learn and succeed and feel safe trying:
- *3) Recognize their positive attributes/aptitudes to create positive attitudes about their worth.
- * 4) Learn ways to assume responsibility and make healthy life decisions based on newly acquired beliefs, interests and skills.

- * 4) Explore academic, trade and vocational opportunities without the stigma of past failures.

Detention and placement centers have the heavy burden of serving the residual cast offs of family and community dysfunction. In order to better serve, detention centers must serve a multipurpose role; not only safely detaining youth but exploring ways to build healthier attitudes, relationships and support systems through adjunct activities that help build self-esteem. For many residents, detention is a consistent thread in their young lives thus it is important for centers to train staff and create programs that build attitudes of support, acceptance and trust especially if the youth are "frequent flyers". Detention can play a stronger role in their recovery experience by creating programs outside the academic requirements.

Additionally, community public awareness coupled with community outreach champagnes can help remove the stigma associated with delinquency. Soliciting outside support helps ground successful rehabilitation building stronger communities everywhere. Adjunct activities in the forms of art, music, yoga etc. are activities that broaden awareness and are easy to learn falling outside the strict judgment of academic requirements. Detention centers must assume some of the public responsibility and in doing so continually experiment and create programs and partnerships that will inspire individuals to build self-worth and succeed.

Creating awareness and community involvement can generate new ideas and ease the rehabilitative burden by effecting change that offers hope and opportunities. A confirmed willingness to try new things and reach outwardly can internally create an attitude of readiness and an atmosphere of enthusiasm where staff can feel secure within the challenging new role. Connecting community warrants this kind of commitment arming us with defenses against the "disconnects" that continue to occur within the system.

Shuman Center has stepped out on the ledge to generate new ways of doing things but I recognize that this is not the case across the board. Without doing the research I can tell you what I observe to be true.

Of the 17 detention facilities in this state, only four presented proposals for CCAP Best Practice Award Detention and Alternative Program Category while 13 did not submit. I cannot judge but can conclude that there is a consistency in the lack of participation and that in order to move forward and make real change we have to collectively be willing to change the way we think, do business and exchange ideas. Are detention centers defined only by their ability to detain? If so can there be room for change?

My hope is that next year every detention facility in the state submit a Best Practice proposal...that ideas are born, tried and shared to create a repertoire of new ways to help our residents. ...that there is more "common sense" programming to also motivate detention staff who will be inspired by each success and change. I hope Shuman's tenacity and resilience as a detention center serves as a catalyst to motivate detention facilities across the state to be creatively involved. I am willing to work with detention centers from the art program aspect and in doing so will help introduce a minimal budget activity that abides by safety and security requirements and involves no additional of staffing. I am certain it will make a positive change in any facility.

(Please refer to the 2015 information from our 2015 Best Practice submission for a complete background program description).

BACKGROUND OF PROGRAMS IN PLACE PRIOR TO THE PROJECT

My personal mission is simple; the script is humanity and my method is art. We have continued the mission of creating programs, expanding our partnerships, generating awareness by publically spreading our mission and creating more "giving back to the community" opportunities for our residents.

My projects provide emotionally stirring cognitive lessons universally applicable in life. I am referring to the creative thinking ability that is learned by having to imagine and effect outcomes in many flexible ways... and having to make due with what's available and still succeed. Let me stress that creativity is not exclusive to just art and that art is not about learning to draw a dog or cat. Creativity in any form is about challenging ourselves, by exploring our beliefs, questioning our realities, creating new possibilities, solving problems in new ways, taking risks, discovering our ability to work within limits and to work without limits and to gain the confidence to dream new ideas all without judgment. These are very subliminal universally applicable messages of every art project I teach and that is offered across the board in any art class across the country.

(Please refer to the 2015 information from our 2015 Best Practice submission for a complete background program description).

DESCRIPTION OF THE PROGRAM

Our program consists of providing creative services to our residents. I have introduced a jewelry arts program in a detention setting using otherwise contraband tools as required. My art and jewelry programs are based on trust which is a powerful privilege for a resident who is ready to try. Offering trust is an important tool as an instructor and an equally important self-discipline lesson for residents. For many residents my ability and willingness to trust becomes their motivation to work with me. I am not advocating that we loosen safety and security reigns but in "picking our battles" within our facility. If we minimize important trust lessons, then we write those very timely "teaching moments" out of our scripts. The downside is we lose the ability to effectively teach sending messages that our students are "unreachable, can't change and unreceptive to learning" ...it's a stigma that stays with them.

Since last year we have complied with the added security prompted by the events nationally. We have remained astute to the needs of safety and have increased our security measures in spite of our 6-year incident free track record.

(Please refer to the information from our 2015 Best Practice submission for a complete program description).

DESCRIBE THE SPECIFIC PROJECT OUTCOMES

In 2015 year Shuman Center proudly accepted the County Commissioners of Pennsylvania's Best Practices Award for Alternative Programing. 2015 brought opportunities to further our outreach and step beyond our boundaries by making our presence known on a national level.

1) NATIONAL PARTNERSHIP ON JUVENILE SERVICES WEBINAR

As a result of our innovative programming I was honored to be part of a national webinar conducted by the *National Partnership on Juvenile services / Office of Juvenile Justice and Delinquency Prevention* and the *National Training & Technical Assistance Center*.

Webinar Topic:

"The Importance of Art Programming in Juvenile Confinement " / March 25, 2015

I presented our jewelry and arts program discussing safety, viability, funding and resident impact as well our future and universal application of art in our everyday lives. The resulting inquiries from detention centers across the country exemplified the interest and need for easy low cost start-up art programs in their facilities. This confirmed the success of our community and preventative outreach directly effecting future change in detention settings nationally.

Webinar Transcript

https://www.nttac.org/media/trainingCenter/1210/March%2025%20NCYC%20Webinar%20PPT_508_ES_4_2_2015.pdf

Webinar Presenters Bios

https://www.nttac.org/media/trainingCenter/1210/Presenter%20Bios%20and%20Photos%20-%20March%2025%20Webinar%20_508c_ES_4_2_2015.pdf

2) 21ST NATIONAL SYMPOSIUM

Additionally, I was invited to serve in three important capacities for the **21st National Symposium** hosted by **The National Partnership of Juvenile Services** and the **Juvenile Detention Centers of Pennsylvania** held in in September 2016. My multipurpose participation included:

- A) The Enough Violence Student Exhibition.
- B) Presenter /The Talisman Project Workshop offered to attendees.
- C) Shuman Center Jewelry and Art Sale created by the talented residents of Shuman Center.

A) ENOUGH VIOLENCE STUDENT EXHIBITION

The Enough Violence Student Exhibition was on view for the participants of the **21st National Symposium**. Enough Violence was a world premier exhibition hosted by the Society for Contemporary Craft (SCC) in which fourteen well established international artists were invited to create artworks portraying violence in their countries. Thirty-one beautifully empowering Talisman and memory boxes accompanied by their written personal stories were created by Shuman residents and displayed in the lower gallery of the *Society for Contemporary Craft* (SCC) in conjunction with the international exhibit. This exhibition impacted the city for over six months due to its very real and powerful statements. This Student Exhibition traveled to 5 gallery and public locations in 2014- 2015 and in 2016 to its 6th public viewing at the *21st National Symposium*.

Shuman Center Allegheny County Website / Enough Violence

<http://www.alleghenycounty.us/shuman/enough-violence.aspx>

B) PRESENTER / TALISMAN WORKSHOP

In September 2015, I conducted the Talisman Project Workshop at the *21st National Symposium* for symposium attendees. The format, materials and tools were a duplicate of the format I used for the Shuman residents in preparation for the Enough Violence world premier exhibition mentioned above. Attendees had the opportunity to experience the emotional written assignment that was a self-discovery precursor for the actual completion of the talisman jewelry piece. Attendees also experienced the level of emotional concentration and critical thinking required to work through the project as did our residents.

As part of preventative outreach, I brought this powerful outreach program to other educational settings. In 2015 I conducted the Talisman Project Workshop for *the Society of Contemporary Craft* through the Museum School Partnership Program / Grable Foundation and Artists and Kids Program / Buncher Foundation where I teach adults and youth. This provided the opportunity to speak about Shuman Center allowing participants to experience one of many empowerment lessons I present to our residents.

I conducted the Talisman Project for the 7th grade classes at South Brook Pittsburgh Public School in the spring of 2015 as part of our partnered outreach and preventative program with the Society for Contemporary Craft (SCC). The middle school venue provides opportunities to work directly with youth and in joint effort create / discuss preventative measures against the future challenges facing them.

In July 2015 I was invited to speak to the Social Justice students of Duquesne University by Dr. Patricia Sheahan. Professor Sheahan requested a presentation and the Talisman Project Workshop with specific emphasis on Shuman Center; presenting our facility, residents, rehabilitative challenges and where we go from here as a progressive detention facility. This group of university students has the particular ability to act as future messengers of our program...many of which have confirmed that they will add it to their curriculum in addition to the insights they gained regarding at-risk youth. These future educators wrote numerous letters of appreciation to me regarding our program, outreach mission and our concern for our residents. I included two email/letters as well as two of the experts from the Reflective Journals of three of Dr. Sheahan's students. I received over 20+ from the Social Justice class and would be happy to forward the remaining upon request. Each letter exemplified how the project touched them on many personal and professional levels. Each was inspired in a different way.

EXAMPLE A / SAMPLING OF PHOTOS FROM THE 21ST NATIONAL SYMPOSIUM AND DUQUESNE UNIVERSITY SOCIAL JUSTICE DEPARTMENT OUTREACH

EXAMPLE B1-B4 / EMAILS & LETTERS FROM DUQUESNE UNIVERSITY SOCIAL JUSTICE DEPARTMENT

C) SHUMAN CENTER JEWELRY AND ART SALE

Our resident jewelry sale was a year round highlight for our center. In preparation for the sales, I worked with residents throughout the year to create jewelry. We created fashion jewelry and items to sell at the *21st National Symposium* as well several other in-house and outside venues. The youth created posters, greeting cards, fascinators, necklaces, bracelets, earrings, bookmarks, keychains and

rings using vintage, recycled and new materials. We introduced a men's line of bracelets and necklaces as well this year.

Over \$1,000 (one thousand dollars) was raised in sales at the *21st National Symposium* with 100% of proceeds donated to the *Western Pennsylvania Humane Society*. The public response has been 100% positive and I have recruited a list of volunteers willing and available to help.

With the remaining inventory, we presented jewelry in the additional following venues raising an additional \$667 bringing a combined total of \$1,667 donated to the Humane Society of Western Pennsylvania for 2015.

Additional sale venues included:

- *A Fair in the Park* presented by the Craftsmen's Guild of Pittsburgh / Fall of 2015
- International Jewelry Gem Show / International Bead Trade Show / Fall of 2015
- Two in-house employees Holiday Sales.

To amplify the impact of this involvement, I have included several comments that reveal how much of an esteem, team and moral builder this has been for our center and our residents. Over the course of the year I have collected the following comments / insights from the residents many of which are simply humorous.

Here are a few:

- ***You mean people really bought our stuff even though we are bad? But did they know it came from Shuman?***
- ***Did I really I get a chance to give back to my community? I never did that before.***
- ***We raised all that money! That's hard!***
- ***Ms. Florida, can we can candy for doing this? (I classify this as an acceptable bribe!)***
- ***Whose jewelry was the best? I bet it was mine!...because mine is official!***
- ***Did my piece sell? How much did the lady pay?***
- ***Is this real gold we used? Why not?***
- ***Maybe next time we could raise the price since they liked it and now we know they will buy it from us!***
- ***Can I keep this bracelet too? (To which I respond yes) Residents have the option to keep or donate items they create).***

I can tell you that preparing the jewelry for sale can be pleasantly challenging because of the emotional input, thought, creativity and immense pride involved in the process. I can confirm when a resident creates and donates a pieces for the sale, it its done with the sincere intent to give back to the community and to help the animals. Generally, for every 3 pieces a resident donates for sale they have created a piece for themselves...and of course inevitably they get the candy!

EXAMPLE C / JEWELRY ARTS KICKOFF CELEBRATION AT SHUMAN

EXAMPLE D & D2 / 21ST SYMPOSIUM / NATIONAL PARTNERSHIP ON JUVENILE SERVICES JEWELRY SALE

EXAMPLE E / JEWELRY CLOSEUPS

EXAMPLE F & F2 / THE STARS OF THE SHOW / ARTISTS AT WORK!

EXAMPLE G / POSTER SALE

3) NATIONAL PARTNERSHIP ON JUVENILE SERVICES BLOG SPOT

As a result of our warm welcoming at the *21st National Symposium*, I was invited to post photos of Shuman student artwork/ jewelry on the *National Partnership on Juvenile Services Art Blog*. as well as to post youth projects from my other teaching venues to include Southbrook Pittsburgh Public School and Spectrum Charter School where I work with an autistic youth.

4) SHUMAN RESIDENT "THANK YOU" RECOGNITION

This year the Shuman Administration planned a student recognition celebration that announced 2014 sales totals for our residents. The recognition serves as internal outreach to inform residents of our supportive efforts and the outreach we do on their behalf as well as confirming their part in it. Additionally, we stressed the importance of their participation in "giving back to the community". A pizza and wings celebration was coordinate for all residents; serving to honor our 6 year "incident free" track record of the Jewelry Arts Program and their hard work in preparation for the successful jewelry sale. The recognition served as the kick-off and recruitment for the 2016 year.

5) "OUT OF HAND" MARCH 2015 / OUTREACH / SOCIETY FOR CONTEMPORARY CRAFT (SCC)

Through all of this we, we've strengthened our partnership with the *Society for Contemporary Craft*. This partnership provides Shuman Center opportunities to reach individuals, organizations and universities we otherwise would be hard pressed to address.

In March of 2015 I was invited to participate in their annual fundraising event called "*Out of Hand*". I welcomed guests with a *Make it Take it* activity that we first piloted at Shuman Center as well as had the opportunity to highlight our ongoing partnership and commitment to at-risk youth. Attendees included board members, current and future donors / sponsors, university representatives, community partners, artists and individual's.

6) "HEART OF CRAFT" LUNCHEON / NOVEMBER 2015

In November of 2015 I hosted a table for the Society of Contemporary *Heart of Craft /Outreach Luncheon*. My role was to speak of our partnership and offer opportunities for involvement with the Society for Contemporary Craft in the form of in-kind donations, financial support and through volunteering. The viability of this organization provides Shuman Center with multiple benefits / resources we otherwise would not have access to such as resident artists, volunteer support as well as supplies and outreach venues. I have become the youth at-risk component to their community programing. This year the **Heart of Craft** video was shown at the luncheon. A released Shuman resident, Taylor M. gave a testimonial about her experience in the Jewelry Arts Program, the Talisman Project Workshop (her piece traveled with the *Enough Violence Student Exhibition*) and the SCC workshop scholarship opportunities all of which she participated in.

<https://vimeo.com/125156354>

<http://www.bing.com/videos/search?q=society+for+contemporary+craft+heart+of+craft+video&view=detail&mid=4E441478F6936FF056AF4E441478F6936FF056AF&FORM=VIRE1>

(Queue to 06:34 minutes in the video to see the segment with Gerry Florida and Taylor M.)

Attending the luncheon was another Shuman community partner, **Store Express**, who has taken an active role in confirming their support in 2015 by:

- Donating popup space to work with residents in after care.
- Making a financial contribution to *Society of Craft Heart of Craft* luncheon to further the development of our community outreach/preventative school programs.
- Offered storage space as needed for my future Shuman Center projects.

PROGRAM EVALUATION

- * We have remained incident free in the six years that we have offered the Jewelry Arts Program
- * In spite of our incident free track record we have increased our security to adhere to stricter safety practices and confirm our ongoing commitment for resident's safety as we increase our presence on a local state and national level.
- * We have increased our outreach and community presence (as mentioned above)
- * We have maintained and gained support of community organizations. (as mentioned above)
- * We have taken an active role in prevention and outreach through presentations to public schools, universities and special events. (as mentioned above)
- * We have served as a resource and national model for organizations working with at-risk youth through art programs.
- * Through our SCC partnership, we have stepped up our role in prevention as working directly with public school youth to empower youth and equip them with insights to make better choices when faced with challenges in their teen years.
- * We create better communication with our residents through assemblies and recognitions.
- * Through our warmly received Enough Violence traveling Student Exhibitions and Jewelry Sales we offer the public insights that help penetrate the resistant delinquencies stigmas and bring awareness to the growing challenges faced by our youth and the entities whose role it is to rehabilitate them.
- * We are a Detention Center committed to the betterment of our staff, residents, community... and in taking that challenge we are open to new successes and new failures remaining committed to explore, learn, improve and expand as we collect and disseminate information on programs that work.

COMMUNITY INVOLVEMENT

Below is an article that was posted in the Tribune Review. It is not a new revelation in the quantity and quality of the work ahead of us. Although the article was meant to degrade the value of our efforts publically, I felt that it confirmed the necessity of our continued public outreach, awareness and community involvement in order to dispel attitudes resulting from misinformation and ignorance regarding the contributive value of at-risk youth once rehabilitated. For all who have supported our mission, this article has solidified their support. It was reported that the press received a backlash of public opinion and had requested to conduct my rebuttal interview of the arts program. Eric Heyl the writer, declined an invite to my Duquesne University Social Justice presentation where I gave him opportunity to publically address his concerns and challenge my efforts with this program as well as create a Talisman..

<http://triblive.com/opinion/erichey/8325402-74/shuman-program-jewelry>

Example J / Tribune Review Article: **"Shuman's offender could one day wear ankle bracelet of their making"**

FOUR FUTURE PROJECTS:

Our success through so many challenges lies with our community partnering such as with the *Society for Contemporary Craft* who has continued to provide unwavering support, public outreach / awareness / program opportunities and avenues to address key funders and legislators in the area.

Moving forward, I would like to confirm easier legal ways of communicating with residents post placement and utilizing the workshop scholarships and outside opportunities I have available through the Society of Contemporary Craft and the Children's Museum of Pittsburgh. I have opened the opportunity to have a released resident assist me in teaching the adult classes I conduct at *Society for Contemporary Craft*, *Carnegie Mellon Osher Programs* and the *International Jewelry Gem Trade Show*. *Store Express* has continued their commitment to offer pop up studio space in their neutral locations. The challenge has been connecting with residents post placement thus leaving these valuable resources underutilized.

IN 2016:

- * I will continue to work with residents through youth and empowerment art and jewelry projects throughout the year.
- * I will continue to work with residents to create inventory for future sales.
- * I will continue to work with work with Duquesne University Social Justice Department / date to be announced for 2016
- * Through the course of my work I have been approached by many artists and individuals from affluent and poverty communities who wish to volunteer. I would like to create more opportunities to utilize volunteers. This year, I will be inviting several volunteers to assist in the Talisman Project Workshop at South Brook Middle School. The required clearances will be provided.

1) FUTURE PROJECT / UPCOMING JEWELRY SALES & ENOUGH VIOLENCE STUDENT EXHIBITION

We will be conducting a Shuman Jewelry Sale and exhibiting the Enough Violence Student Exhibition to its 7th Location in March 2016 Hosted by the Juvenile Detention Centers and Alternative Programs of Pennsylvania and Sponsored by the National Partnership for Juvenile Services. It is titled:

"Building upon What We Do Well: Improving Outcomes for Justice-Involved Youth"

A Learning Institute on What Works in Juvenile Justice

I have also confirmed thus far two additional Jewelry Sale locations in the following venues for 2016:

- The Mt Lebanon Artist Market / Fall of 2016
- The International Jewelry Gem Show / Fall of 2016

2) FUTURE PROJECT / SOCIETY FOR CONTEMPORARY CRAFT (Programs and Outreach)

In March of 2016, I am invited as a host to participate in SCC's annual fundraising event called "*Out of Hand*". I will be welcoming guests and presenting our partnership, my work with Shuman Center as well as our preventative program The Talisman Project through the Museum School Partnership and the Grable Foundation who provides grants for public school and preventative outreach. Attendees will include board members, current and future donors / sponsors, university representatives, community partners, artists and individual's. The preventative Talisman Workshops and outreach is conducted through Pittsburgh Public Schools, Duquesne's University and through adult' workshops and *Artist and Kids* programs funded through the Bunchier Foundation.

3) Society for Contemporary Craft confirmed our involvement in creating empowerment projects for their public **Drop in Studio** created with each new exhibition. I will create all **Drop in Studio** projects that can be also delivered to our residents. An SCC artist will be sent to Shuman Center on specific weekends to assist me in conducting the **Drop in Studio** concurrent with the current themed exhibition. The assisting artist will be funded by the Society for Contemporary Craft (SCC) and will have all required clearances. SCC will provide supplies.

* SCC has confirmed continued scholarship workshop support for released residents.

* SCC has confirmed our continued preventative outreach for Spring 2016 at South Brook Middle School through the Museum Scholl Partnerships with grants from the Grable Foundation.

* SCC has confirmed continued support for our ongoing program in the form of future supplies, volunteer and artist residency programs

3) FUTURE PROJECT / REVAMPED FURNITURE EXCHANGE

I have confirmed a partnership with *Thriftique* Resale Outlet Stores a service of the *National Council of Jewish Women (NCJW)* Pittsburgh Section a nonprofit organization who strives for social justice by improving the quality of life for women, children, and families and by safeguarding individual rights and freedoms. All of their retail establishments serve to fund community service programs and advocacy efforts.

Thriftique will provide a piece of used furniture that will be sanded, prepped and primed before delivery to Shuman Center by a volunteer. Store Express has confirmed they will house the furniture in any interim. Our residents will design and decoratively paint the furniture where after *Thriftique* will place the piece in their resale shops and the proceeds will go toward their community programming. We want to create an ongoing partnership to continue this project with other nonprofit resale shops in the area. Nontoxic materials will be used: Acrylic water based paint, brushes, plastic storage containers and tarps are the only supplies required. I have provided an example of painted furniture.

EXAMPLE H / REVAMPED PAINTED FURNITURE

4) FUTURE PROJECT / WHY ART? BILLBOARD

Art budget cuts have been a continual problem especially for economically distressed schools. This year, we will debate the problem with residents and offer ways we can help. As a way to empower our students I will have posters created that will translate into billboards addressing the importance of the arts in our lives to solicit their involvement in this very important legislative issue. I am providing our residents a voice to effect the attitudes of legislators and apathetic community members who do not recognize the everyday value of art through the many forms it takes.

(Examples include: painters, interior designer's cartoonists, musicians, poets, greeting card artists, advertising specialist, creative writers, rappers, fashion designers, hair stylists, actors, singers, dancers, screenplay writers, set designers etc. all forms of art used by everyone including the legislators who effect the funding!)

The billboard will be divided into a two sections: one section will be stark white and in small black letters ask the question "Why Art". The other section will be artfully designed with the answer "Because". It will beautifully depict art symbolism in many artistic forms. The billboard template will require only paper and markers.

Lamar Sign Company will create the billboard. An assistance grant is available through Lamar. I will apply for a public art grants through the Pittsburgh Cultural Trust, Pittsburgh Foundation and the Pittsburgh Arts Council to fund the cost of the billboard. Society for Contemporary Craft will help with the material budgeting and provide a resident artist and volunteer to assist me. The mural will be created on white paper using paint and markers and converted to jpeg and sent to the company for enlargement.

Estimated cost will be \$1,000 per month for a shelter billboard. Grants available can be from \$2,500 to \$10,000.

In 2016, I will also be working with South Fayette Correction Facility (SCF) to offer a volunteer class to in adult inmates. The facility houses over 2000 male inmates.

The billboard idea has inspired SCI's Jeffrey Bigam Recreational Director Department of Corrections who has confirmed his interest in creating a billboard addressing the same question with his inmates.

The additional benefit of working with adult inmates can provide insight into delinquency problems and preventative solutions. Their input also provides a way for adult offenders to offer insights to effect positive change with juvenile offenders as well as effect legislation that will help arts funding filter back into our communities,

Example I Why Art? Billboard

FUNDING

* Shuman Center / Allegheny County / Special Projects

* The Society for Contemporary Craft continued confirmed support provides, programs, supplies and resident artists through the Museum School Partnership funded by the Grable Foundation and Artists and Kids Program funded by the Buncher Foundation as well as a public forum to highlight our cause.

* Workshop Scholarships from the Society for Contemporary Craft

* Workshop Scholarship from the Children's Museum of Pittsburgh.

* Private and in kind donations of supplies of recycled materials.

* Volunteer Support

* Store Express Storage Space and pop up studio spaces.

(Refer to 2015 Best Practices to see list of confirmed support who are also have confirmed for this year)

Juvenile Detention and Alternatives Program

Best Practice Award

Nomination Submission

Gerry Florida

Shuman Juvenile Detention Center

Jewelry and Arts Program & Talisman Project

"Enough Violence"

Pittsburgh, PA

**SUPPORTING DOCUMENTS
and EXAMPLES**

**Example A / Artwork created by attendees of the 21st National Symposium
Talisman Workshop and Duquesne University Outreach**



EXAMPLE B1-B4 / EMAILS / LETTERS FROM DUQUESNE UNIVERSITY SOCIAL JUSTICE DEPARTMENT

With permission here are examples from three of over twenty Duquesne University Social Justice students who sent email letters as well as their Journal Reflections on the impact our program has made in their learning.

EXAMPLE B1 / EMAILS / LETTERS FROM DUQUESNE UNIVERSITY SOCIAL JUSTICE DEPARTMENT

Ralonda Roberston
 Reflective Journal / Duquesne University
 GFDE 554

July 2, 2015-Not really the end, just the beginning

Today was one of the best presentations ever. I love Gerry!! Her personality, attitude, and way of thinking and viewing people and the world is something to admire. She is so passionate about what she does and the way that she presents it is dynamic. She reflects on her own experiences and has created a program for those youth that are often written off and discarded. Instead of joining the team, she decided to create a team by going the opposite direction and picking up those she found along the way and sharing with them a part of herself through the arts that ultimately lifts them up and drags them along a journey of self-reflection and building. I know and understand many of the challenges that these youth face that she works with and even walked in their shoes inside those walls, which for me, was a major eye opener of what I didn't want to be. I know their stories and see their paths traveled every day when I step out of my door. I see the youth that are lost, alone, and trapped in a world that can be hard to exit but I consider myself to be a living witness of hope, determination, and the struggle to want and do more. We all need help and I am thankful that I had a strong family of females with me to keep me on the straight and narrow, not without many life lessons learned hard along the way, which is what Gerry is for many of her students. Her work is outstanding and her mission is dynamic. I am so glad that she was invited to speak to our class. I don't know what my time on this Earth

is truly meant to consist of but I know that it includes working with youth. I want to help shape lives for the positive and maybe be that one person that provided something or a take away for others to be better, which I think Gerry does. I look forward to speaking with her again soon. Dr. Sheahan you have a great network of individuals that you know and are affiliated with. You have provided us with a great deal of tools and resources to truly expand our imaginary backpacks and I know that mine has been abundantly loaded!! Even though this is our last day of class it is only the beginning of a long lasting relationship that I hope to have for years to come. Thank you for an amazing course that was nothing of what I expected to be but more than I could ever have imaged. Thanks for being the outside of

the box professor that brought learning to life making correlations between the social injustices, our youth and teaching all through the arts.

EXAMPLE B2 / EMAILS & LETTERS FROM DUQUESNE UNIVERSITY SOCIAL JUSTICE DEPARTMENT

From: Ralonda Robertson
Sent: Friday, July 03, 2015 12:53 AM
To: Dr. Patricia Sheahan
Subject: Email to Gerry

Dear Gerry,

Thanks for a wonderful and innovative presentation. Your work with the youth at Shuman Center sounds so wonderful. You seem to create a space where individuals can come and be themselves and experience hands on activities, emotions, and positive interactions that many of them have never had or have been well removed from, which has to be so uplifting. Knowing first hand, what the walls of Shuman look like and how cold and lonely it can be, brings me joy to hear that there is someone that comes from the outside to give these youth a brief moment of peace and solitude away from their everyday routines and survival tactics that they often have to display inside and outside of those walls. Through the art that you have them to create these youth are given something tangible to call their own, provided insight about themselves that many have never considered, and away to forget for a minute all of the bad decisions that landed them in that facility but also consider how they can do better with the next chance. You don't restrict their thinking and imaginations and allow them to be as creative as they can be while still residing in their known world through their language, choices, and artful expressions. Each child can remain an individual within a larger group sharing more about themselves with no words than most can imagine.

You allow yourself to be more than just a teacher and take a personal interest in each child fueling them with indirect inspiration by asking questions and assessing what they need to open up and expand their thinking. Even with a revolving door of youth coming in and out you provide equality, identity, and warmth for every child that enters into that space. No one is labeled, looked down upon, judged, are defined by their prior decisions, only living and existing in that moment putting different things into perspective as expressed through their simplistic or complex creations. You don't push or mandate but constantly encourage participation which is a choice that they are able to make that makes them feel empowered and in control, what every child thinks is life☺. The whole experience is therapeutic, meaningful, creative, and well-structured without well-defined lesson plans, sessions, and direct teaching only. Through the arts your classified juvenile delinquents, bad apples, criminals and many other negative titles are transformed into more than what people see and perceive them to be and become free in their minds to dream, be their chronological age, and young artist. Thanks for giving them a voice and way out. Thanks for going above and beyond. Thanks for always having an open heart and mind that doesn't have a bias opinion about the book before you ever get a chance to open up the pages. Thank you for being willing to enter into the trenches and look into the eyes of children that are lost and want to be found and willing to extend your helping hand in any way possible and be whatever they need you to be, within your power. Your reliability, dedication, love, care,

compassion, and everything else that you bring to the table is what the children see and grab hold to, taking a piece of you around with them always. I love what you do and your attitude and interpretation is even dearer to love. I am glad to have formally met you and look forward to speaking and meeting with you again. Thank you for the materials to create a small piece of me, that was inspired through your vision, and that I can take with me for others!!

Continue to embrace what others have destroyed, something that I hope to walk in as well. Ralonda

EXAMPLE B3 / EMAILS & LETTERS FROM DUQUESNE UNIVERSITY SOCIAL JUSTICE DEPARTMENT

Dear Ms. Florida,

Thank you for taking the time to come to our class to discuss your powerful social justice work at Shuman Center, and for engaging us in the process of constructing our own talismans.

I was struck by many things in your presentation, but there were three things that really stood out to me about your work - first, that you "sedate convicts with jewelry", second, that you use art as a tool to promote social justice, and third, that you use recycled materials that are often thrown away to create beautiful jewelry.

Having worked at Western Psychiatric Institute and Clinic with a population of troubled youth, some of whom had visited Shuman in the past, some of whom probably would be shuffled out of the mental health institution and into the prison system at some point in their lives, I was very interested to hear about the ways in which you used art to get through to these youths. When you said, "I sedate convicts with jewelry", I was thinking to myself, "wow, how can this be so". At Western Psych patients were sedated often with large amounts of pharmaceuticals, but never with art, never with jewelry. I think this really demonstrated how powerful your program at Shuman is. You are able to get through to a 'difficult' population, simply by allowing them to express themselves through the art of jewelry making. A major goal of our course was to see how art can be used as a tool to promote social justice, and you are a living example of how this can be done and is being done.

From an artistic perspective, I really liked that you use recycled materials, things that are often thrown away, to create these beautiful pieces of jewelry. I do not know if you mean it as such, but I really saw this as a metaphor for the youths with whom you work. Often these children come from very difficult surroundings, and they are often thrown away by society, living out their lives meaninglessly in the clutches of the prison system. Much of society does not see these youth, they are not aware that they exist, or they choose to ignore them, much like the materials that are thrown away or unseen in the art that you make. I mean who really takes the time to gaze into a bottle cap to see its beauty or its

worth? And who really takes the time to look at 'juvenile delinquents' or 'convicts' to see the light or the beauty that is within? But when you take some time and remold these materials, you end up with something beautiful. Just as when you take the time to work with the youth of Schuman, you are taking the time to uncover the light and beauty within each person, so that they too become beautiful and displayable to society like the jewelry, rather than thrown away like the bottle cap.

Thank you again for sharing your art and yourself with our class last Friday, and I look forward to opening the energy of my talisman one day when it is most needed!

Best Regards,

Katherine Symans

EXAMPLE B4 / EMAILS & LETTERS FROM DUQUESNE UNIVERSITY SOCIAL JUSTICE DEPARTMENT

Social Justice in Educational Settings: Reflective Journal

Kathryn Blye

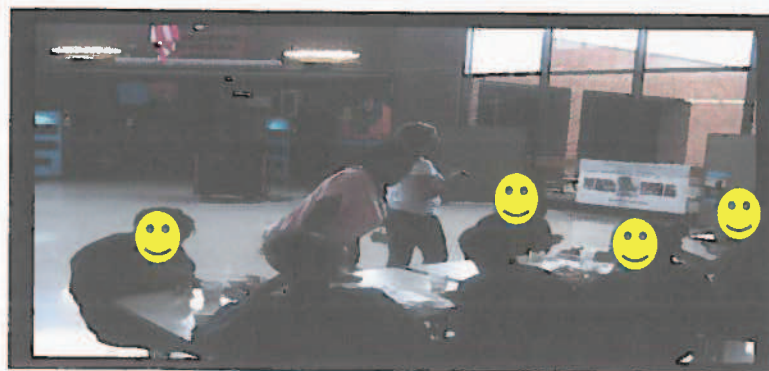
Duquesne University

July 2, 2015

Talisman—Challenging the Adversity in Our Lives

Tonight in class Gerry Florida shared her experiences with us about teaching jewelry art at Schuman Detention Center. It was inspiring to learn about the positive impact her art class has made on the students at Schuman. I enjoyed learning about the significance of the Talisman jewelry piece and how this form of art has been an outlet for many students to face challenges and express hardships in their lives. My favorite part about creating the Talisman piece was thinking about asking for forgiveness, offering forgiveness, and forgiving yourself for something. I think this is a healthy way for anyone to release any negative emotions and feel at peace with themselves and those who have hurt them. Personally, creating the Talisman piece was very therapeutic for me. I focused on creating a Talisman piece for my sister Jaclyn and I. She went through a lot of hard times growing up and when I was younger, I didn't always understand. She was involved in a very mentally and physically abusive relationship, which caused a lot of distress for my family and myself. Although I never stopped loving her, there were times when I felt hatred towards her because I couldn't understand why she was choosing to be with a sociopath when she had a family that truly loved her. Also, it was difficult because she put her own life and my entire family's life in danger. Luckily, she got out of the relationship and moved across to country but it took me almost two years to let go of the anger and frustration I felt towards her. However, I am so proud of her for her strength and courage to be able to overcome such a difficult and scary time in her life and I am so grateful to have my sister back and healthy. Creating the Talisman piece allowed me to reflect on a difficult time in our lives and appreciate my sister for overcoming her struggle.

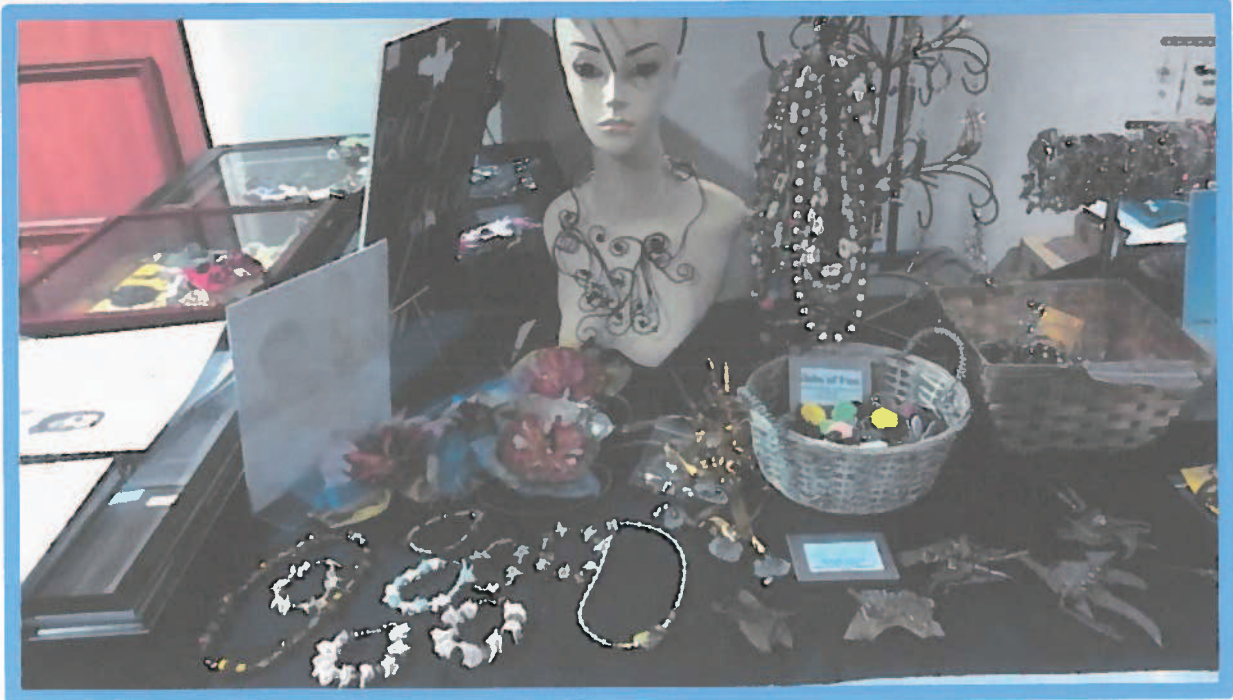
EXAMPLE C / JEWELRY ARTS KICKOFF CELEBRATION AT SHUMAN



Example D / 21st Symposium / National Partnership on Juvenile Services Jewelry Sale



Example D2 / 21st Symposium / National Partnership on Juvenile Services Jewelry Sale

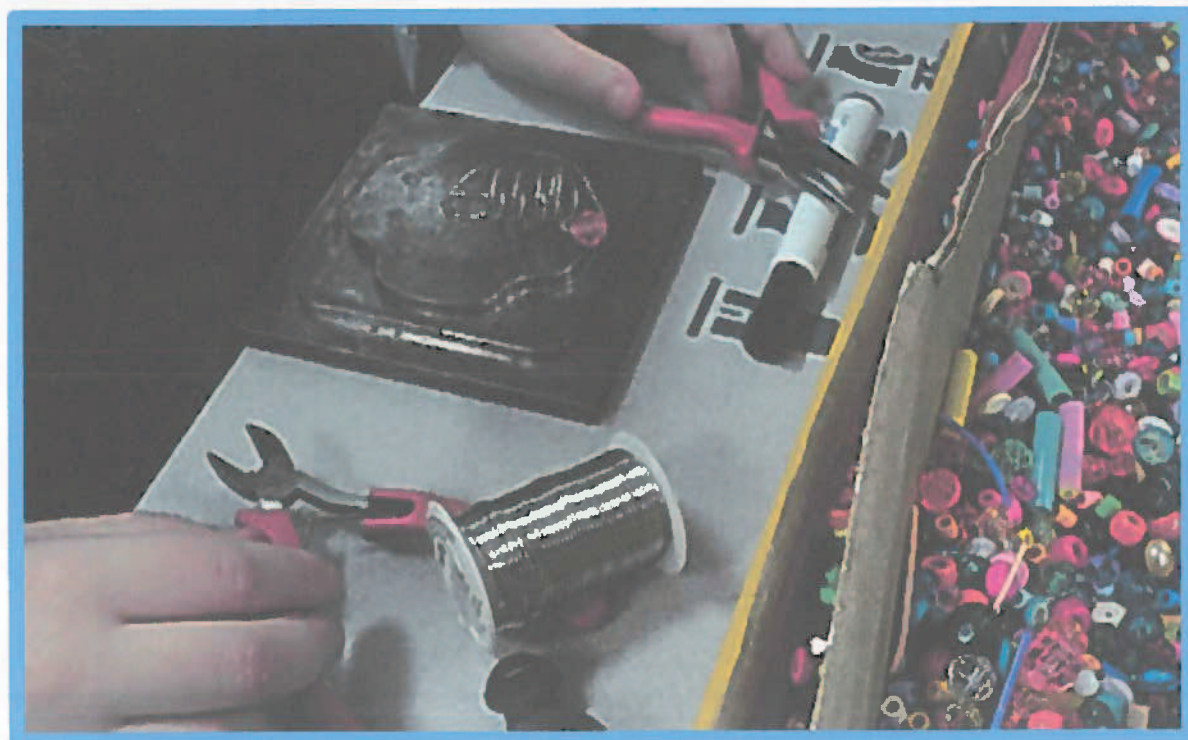


EXAMPLE E / JEWELRY CLOSEUPS

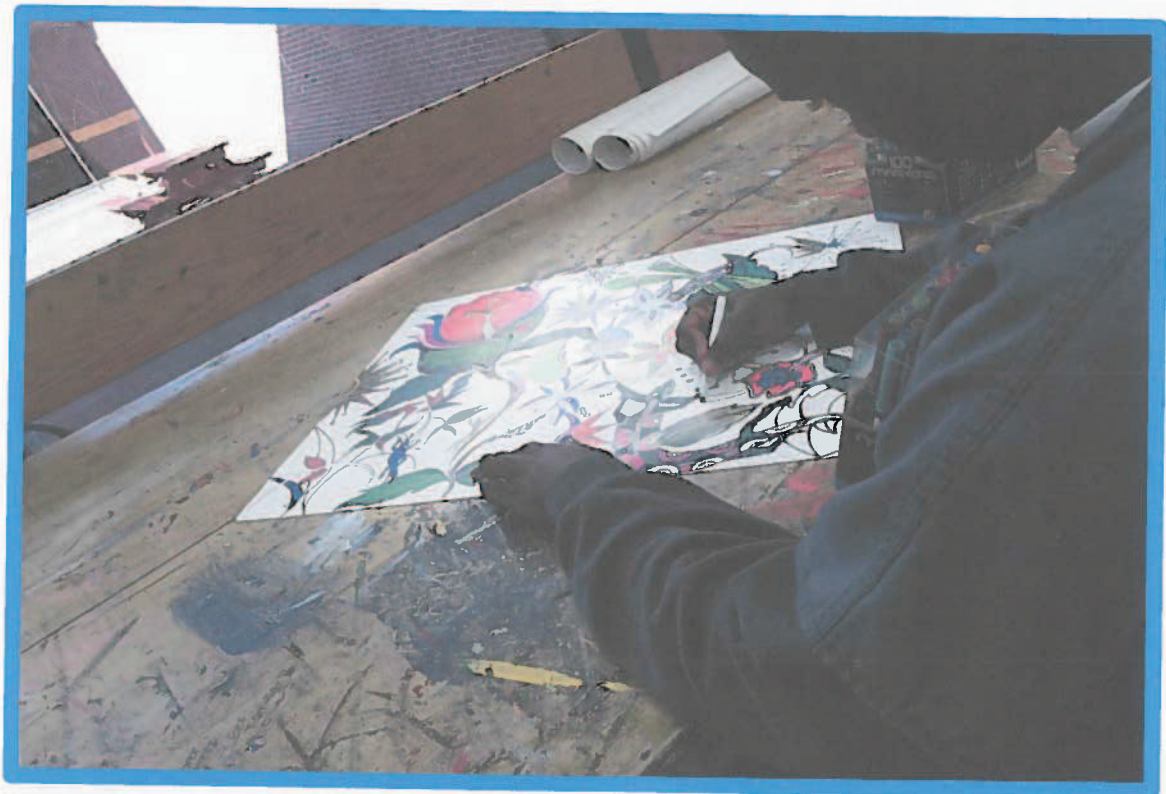


BEADED GLASS PENDANT

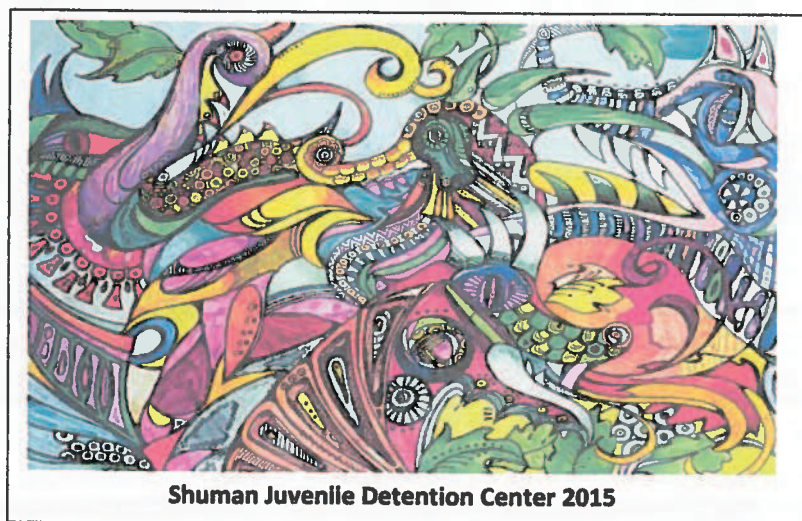
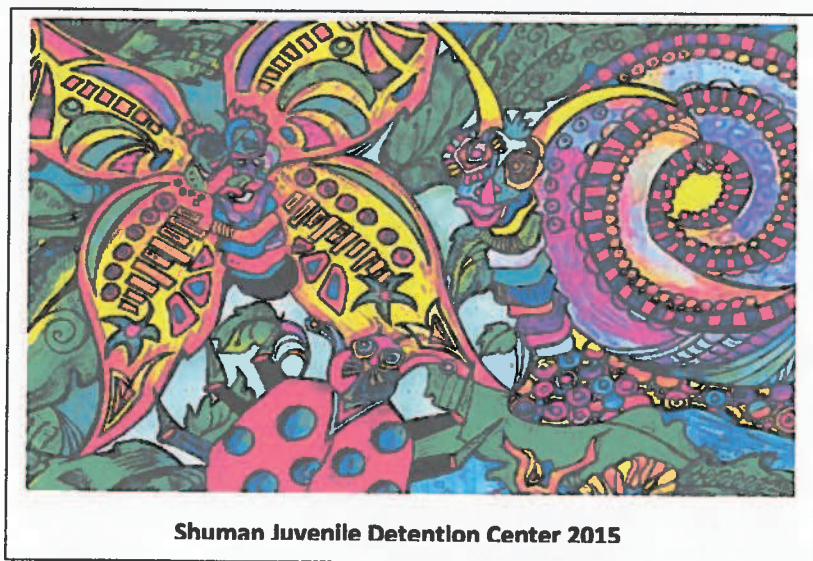
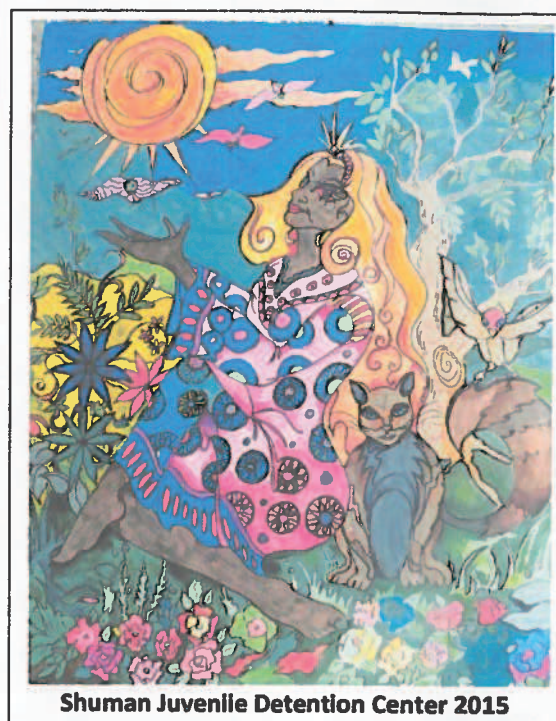
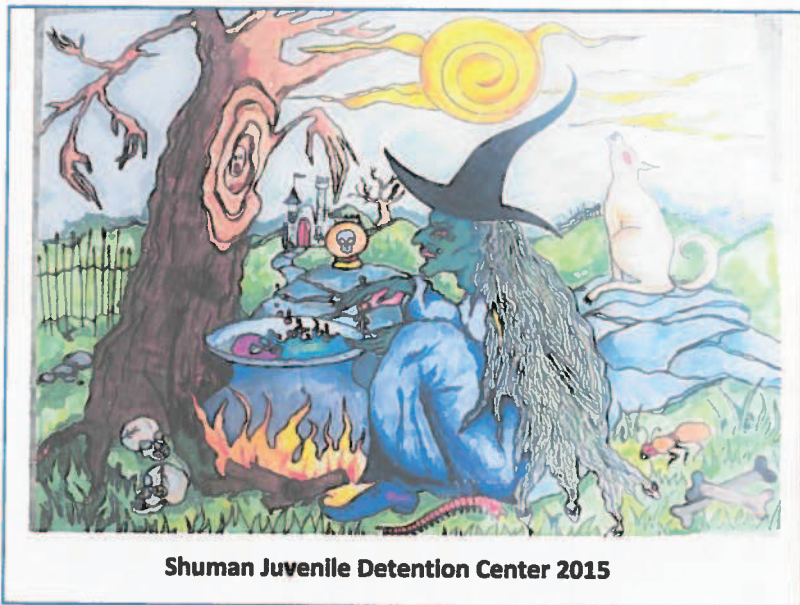
EXAMPLE F / THE STARS OF THE SHOW / ARTISTS AT WORK!



EXAMPLE F2 / THE STARS OF THE SHOW / ARTISTS AT WORK!



EXAMPLE G / POSTER SALE



EXAMPLE H / REVAMPED FURNITURE EXCHANGE

Example taken from: <http://paulagold.tumblr.com/post/22841388452/hand-painted-dresser-by-ralph-garrett>



EXAMPLE 1 / WHY ART? BILLBOARD



HEYL: Shuman's offender could one day wear ankle bracelet of their making “

BY ERIC HEYL | Sunday, May 17, 2015, 9:30 p.m. Pittsburgh Tribune Review
DAILY GALLERY

Talk about your harsh penalties.

Allegheny County's youthful criminal offenders are receiving increasingly severe punishments for their misdeeds. In a move obviously designed to punctuate the county's tough-on-crime stance, some incarcerated delinquents are being shepherded into crafts classes.

Shuman Juvenile Detention Center in Lincoln-Lemington just won the County Commissioners Association of Pennsylvania's 2015 Detention and Alternative Program Best Practices Award. Why? The association was highly impressed with the center's jewelry-making program.

Under the watchful eyes of guards and artisans, this "Scared Straight"-type initiative forces delinquents to confront their inner Cartier. Out of salvaged and recycled materials, they craft rings, keychains, necklaces and bracelets.

Some of the more hardcore detainees make their own earrings.

Many adult prison inmates probably would recoil in fear if they were subjected to such extreme rehabilitation measures, but Shuman director Earl Hill makes no apologies for the jewelry program's intensity.

"Offering this program has been eye-opening, as we learned that the arts played a major role in transforming not only the residents, but the staff, as well," he said. "This program builds confidence, creates something of value to others, allows for freedom of expression and helps develop creative and critical thinking, logic and problem-solving skills."

About the only thing this impressive program appears not to do is discipline delinquents who deserve it. But why would one expect the outdated concept of discipline to play a significant role at such a holistic juvenile detention center?

Shuman's more notable detainees in recent weeks include a 17-year-old male apprehended because he fired a gun on the North Side and a 10-year-old girl who could be charged with arson. Nice to see they have a place in which they can cultivate their creativity while they wait for their criminal cases to be adjudicated.

According to information the county provided, the tools used to produce the jewelry include hammers, pliers, files and wire cutters. The elementary school arson suspect probably is disappointed that no welding torches are utilized, but Shuman officials are wise to limit the young criminals' access to potential weapons to hammers, pliers, files and wire cutters.

That minimizes the possible risks in the Shuman art room — sorry, the room that officially has been rechristened the "Shuman Design Studios." The jewelry is made primarily by bending and cutting wire, although never cutting it so its point is sharp. That's probably because delinquents are aware far harsher punishments await if they do something to get expelled from the jewelry program. Shuman offers its criminal charges instruction in yoga, meditation and aromatherapy.

Without violating the Eighth Amendment's provision against cruel and unusual punishment, you can't get much more punitive than that.

Eric Heyl is a Trib Total Media staff writer. He can be reached at 412-320-7857 or ehey@tribweb.com.