



Colorado Continuum Capacity Crisis- Children/Youth with Complex Needs & Behaviors

July 2022

Where the Conversation is Happening Today

Policy & Rule

Policy Advisory Committee (PAC)
-Child Welfare SubPAC
-County Children & Family Subcommittee

CW & Medicaid

HCPF RAE CDHS
Counties (HRCC)
Collaborative

Delivery of Child Welfare Task Force & Subcommittees

CW Prevention

Prevention Task Group & Subgroups

Colorado Child Abuse Prevention Trust Fund

Juvenile Justice

CYDC Statewide Advisory Board & SB71 Subcommittee

Family First Juvenile Justice Workgroup

CW & Providers

Child Welfare and Provider Town Halls
CAFCA Brainstorms

Fostering Colorado/ Counties Meeting

Family First Independent Assessment Workgroup

ASO Monthly Regional Cohort Meetings

Counties


CHSDA Executive & Legislative Committees

Monthly Regional Directors Meetings

Foster Care & Kinship Groups

Agency Advisory Councils & Subcommittees

...But there's no one place to bring stakeholders together for ongoing strategy & CQI discussions with leadership at the table to refine the continuum together



Federal & State Cross-Sector Reforms Converging

**Behavioral
Health Reform-
Establishing
BHA**

**Family First
Prevention
Services Act**
-RCCF □ Q RTP
-Independent assessment

**Child Welfare
Reform**

Colorado Child Welfare Reform (SB18-254)
and the Delivery of Child Welfare Services
Task Force

**Institutions for
Mental Disease
(IMD) Issue**

Q RTPs must be less than 16 beds in
order to be eligible for Medicaid

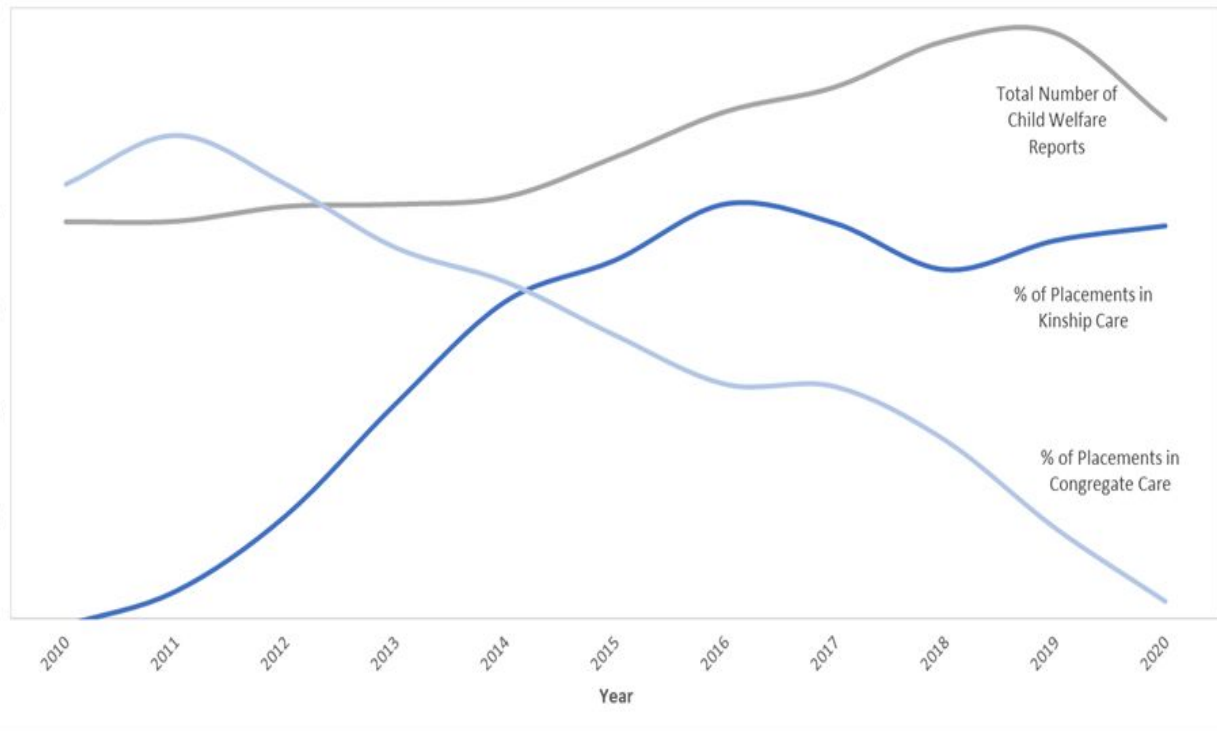
**Juvenile Justice
Reform**

SB19-108 & SB21-071
Restrictions on use of detention

...while Colorado is experiencing a crisis for children and youth with the most complex needs/ behaviors across the continuum and a COVID pandemic.

+ New Department of Early Childhood

Congregate Care Trends in CO



Child Welfare #s (end of March 2022):

- 3254 children in a family-like setting (90% of out of home placements)
- 239 children in a congregate care placement (6.6% of out of home placements)

Congregate care placements have significantly declined across CO in recent years. However, we are seeing more children/youth “stuck” in county offices, hotels, hospitals, and in detention because there are a lack of available placements across the continuum for various populations with complex behaviors (both for family-like settings and residential settings).



Scope of the Problem Today

CHSDA Survey- High-Acuity Numbers

Timing of first survey: August/September 2021

Timing of repeat survey: May/June 2022

	August 2021 (n=36 of 64 counties including all of the Big 11 counties)	June 2022 (n=28 of 64 counties including all of the Big 11 counties)
In the past 90 days, how many children/youth have your caseworkers had to stay with in a hotel, county office, or other location because there were no available placements? (this is also now being tracked in Trails)	n/a- we didn't ask this question	24 <i>(future data ask-identified reason for no available placements)</i>
# of children/youth in county custody that are currently in a residential facility OUT of state	24	18
# of children/youth currently in the hospital today	26	18
# of children/youth in county custody that are currently on the run today	69	35

**This data is incomplete. Need data from hospitals, CDHS, and HCPF on the full scope of the problem across the continuum. Can we agree on the most valuable data to track across our systems that we can update every few months?*

Who: Populations that get "stuck" the most today:

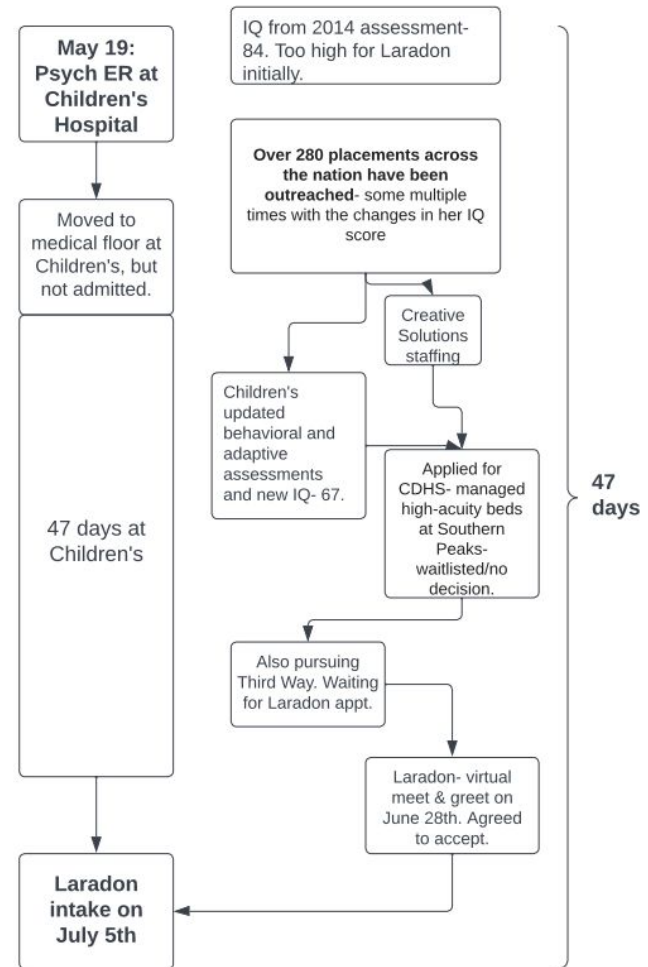
- History of running
- History of criminal charges, aggression, property damage, conduct disorder
- Substance use
- Sexually predatory or offending behaviors, SOMB
- Self-harming behaviors
- Intensive mental and behavioral health needs and co-occurring physical health challenges
- Intellectual or Developmental disabilities
- Transgender, transitioning youth

Where: County Offices/Hotels, Hospitals/EDs, Detention, short-term placements

Recent County Ex:

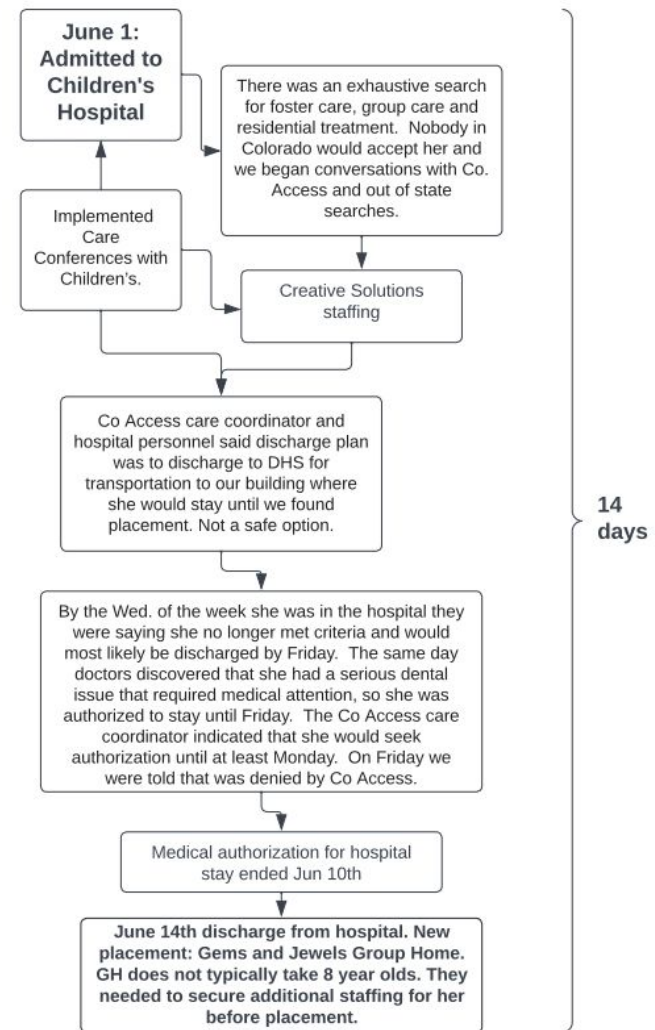
17 year-old Female in Mesa County

MD's adoptive mother was not able to bring her home from the hospital due to behaviors (physically aggressive to adoptive mother, threatening to kill her, destroying property at home, drinking dish soap, lower functioning). MD was placed in DHS custody on May 17, 2022. Went from an M-1 Hold to a host home as no other placements were willing to accept her. Entered Emergency room.



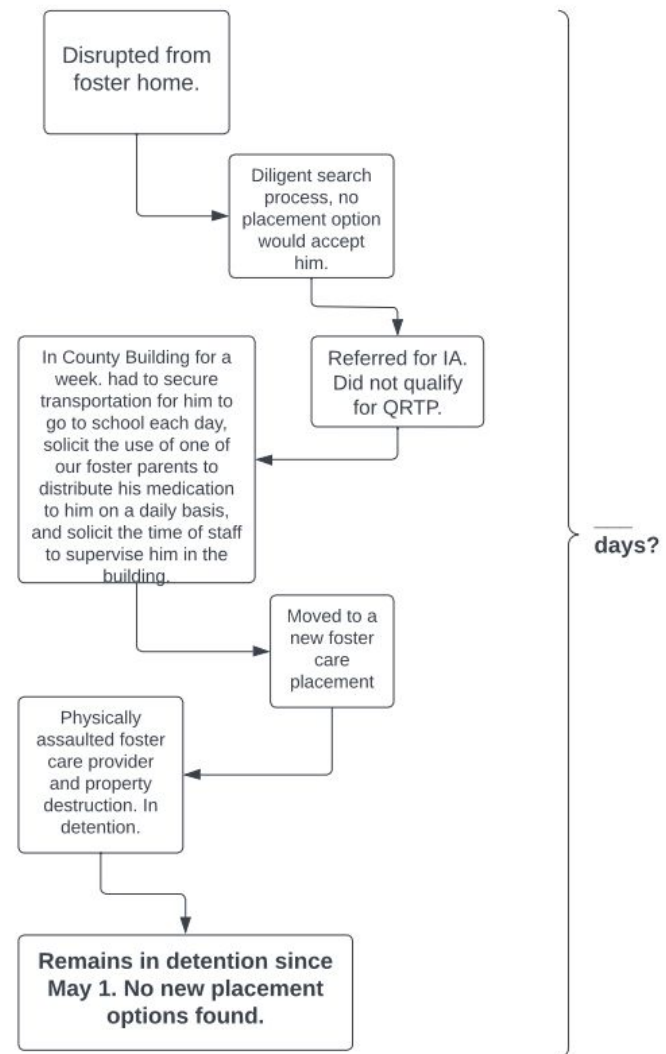
Recent County Ex: 8 year-old Female in Jeffco

She has a significant trauma history and has been in foster care due to parents substance use and mental health issues. She has aggressive and assaultive behaviors. Foster parents found extremely graphic journal entries and drawings that were both sexually explicit and homicidal in nature. She also expressed concerns of dissociative types of behaviors. Foster parents indicated she could not return to their home.



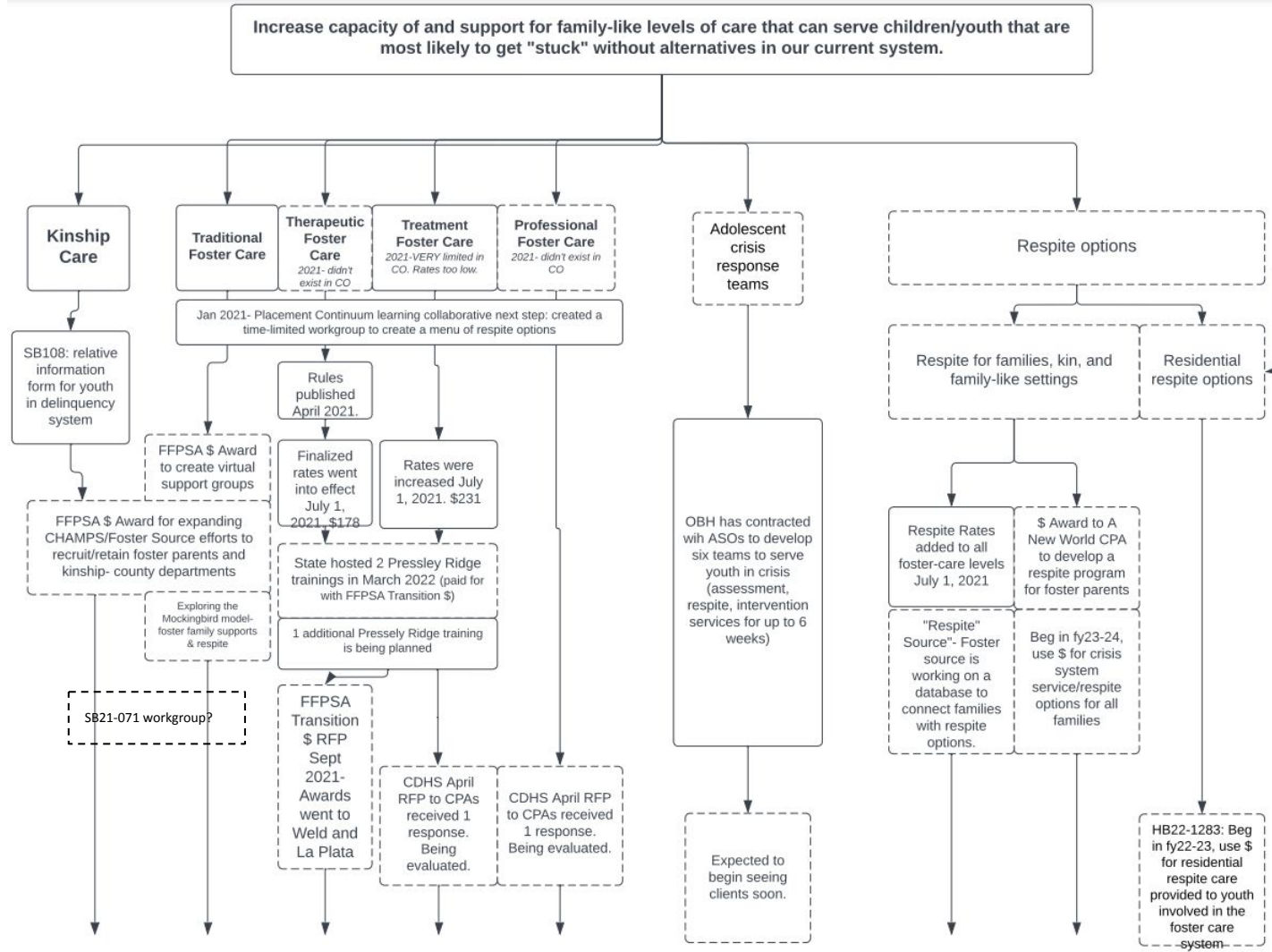
Recent County Ex: 13 year-old Male in Adams

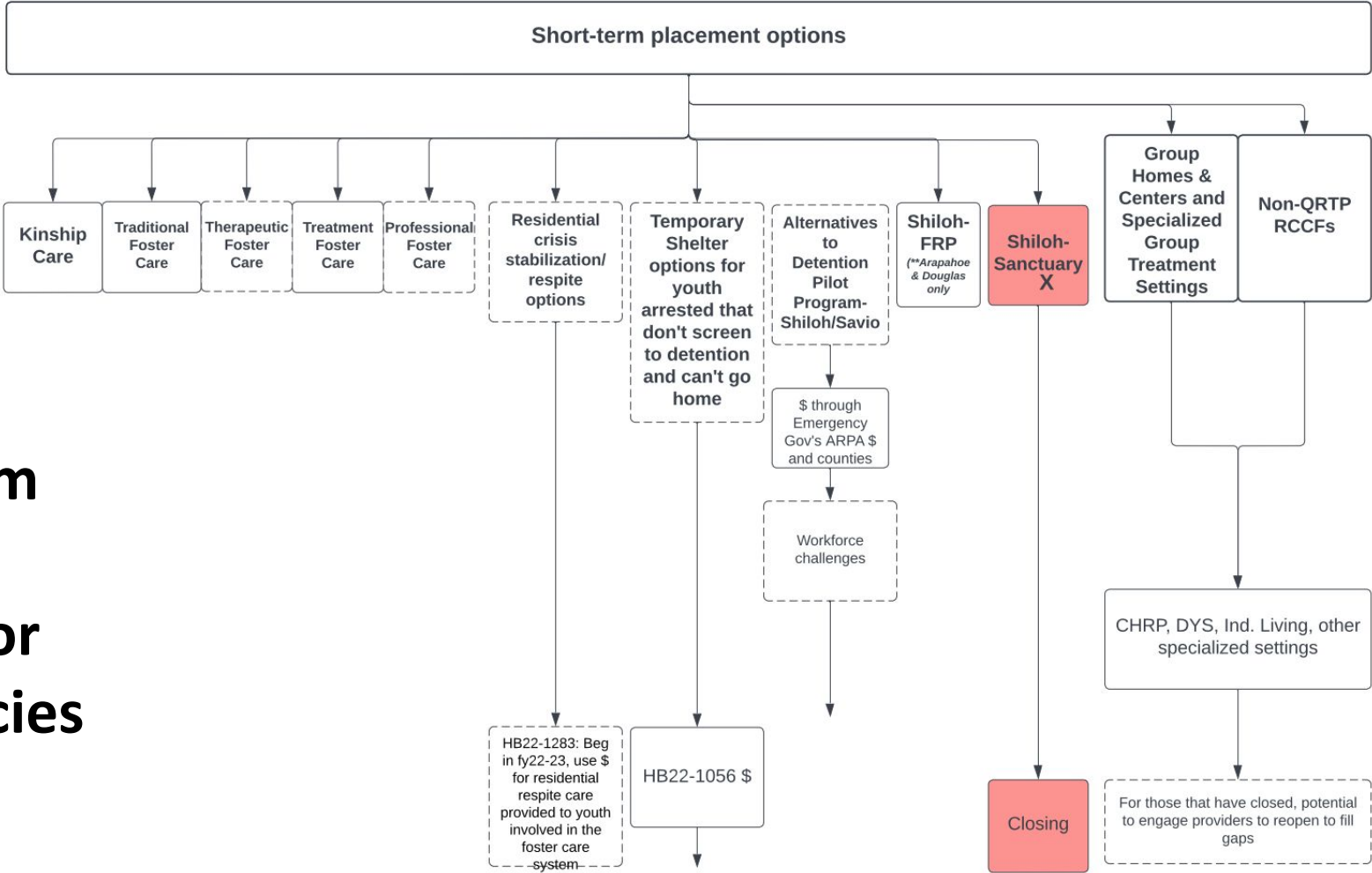
This youth has a history of aggression and disruptive behaviors resulting in discharges from foster homes; he has a history of significant neglect and abuse. He disrupted from a foster home and the placement team worked diligently to find a placement option, without success. He was in the county department's building for over a week due to no placement options and has been in detention since May 1 after assaulting another foster care provider.





Family-like setting options



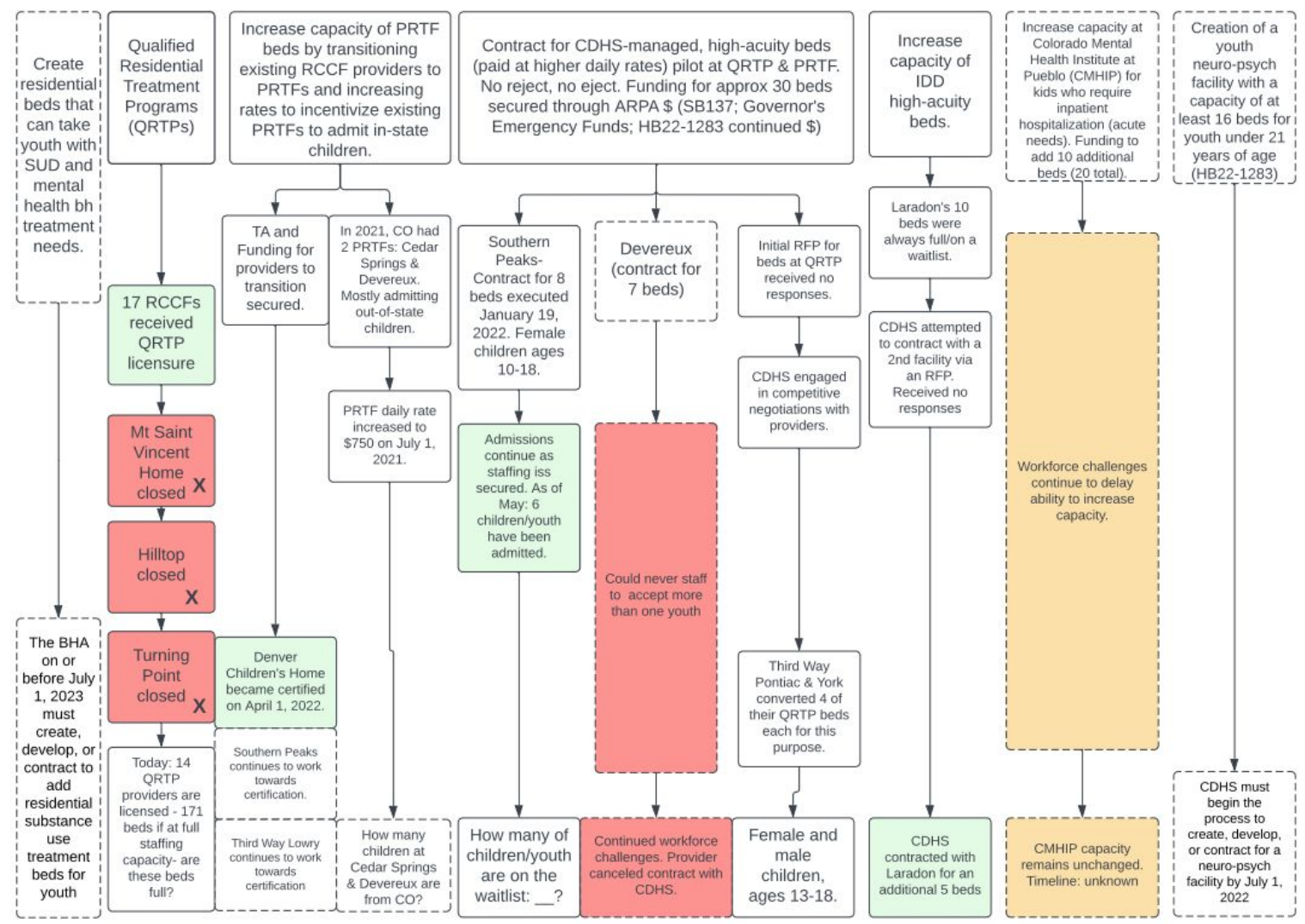


Short-term setting options for emergencies



Residential Options

**Bed tracking database- initial build has begun. First iteration expected FY22-23.



Resources

- [Transitioning Providers](#) resource from CDHS provides a snapshot of facilities approved as QRTPs, providers pursuing QRTP designation, facilities that are pursuing (or currently have) a PRTF license; and facilities pursuing other options.
- **CDHS' [Colorado Inventory of Actions to Adjust the Placement Continuum](#)** (Initially released August 2021; Last updated May 2022; transitioning to a strategic plan document)
- [Placement Continuum and Support Primer](#) (CDHS- July 2022)
- CDHS reference guide details out differences between RCCF-QRTP, RCCF Non-QRTP, and PRTF levels of care: There is a [long version](#) of the resource and an [executive summary](#) version available.
- [Placement Continuum Learning Collaboratives: Themes & Next Steps](#) (January 2021)
- [CCI/CHSDA Letter to Directors Barnes and Bimestefer re: High Acuity Crisis](#) (September 2021)
- [DRAFT Recommendations from the Medicaid Subcommittee](#) of the Delivery of Child Welfare Services Task Force (March 2022- currently being revised)
- [Behavioral Health Transformational Task Force Recommendation Report](#) (January 2022) for spending ARPA stimulus \$
- [Family First Implementation Guide for County Directors](#)
- CDHS [Flowchart](#) of Funding Options for Residential Treatment
- [HRCC Collaborative](#) (HCPF, RAE, CDHS, County)